



GITI 4x4 AT 71

A Specially Designed All-Terrain Pattern for Off-Road Vehicles, Featuring Low Noise and Durability Performance.

Rim size:

🛞 17 - 20"

Aspect Ratio:

📏 50 - 70

Max. speed:

🕒 180-190km/h



EQUAL FORCE CASING DESIGN

Improves overall handling, lowers irregular wear, and increases tyre life.



FEATURES & BENEFITS

▶ **Tread Compound**

Special compound for off-road, improve noise, wet ground and rolling resistance at the same time

▶ **Belt**

High-strength steel wire to enhance the rigidity of the tread

▶ **Carcass ply**

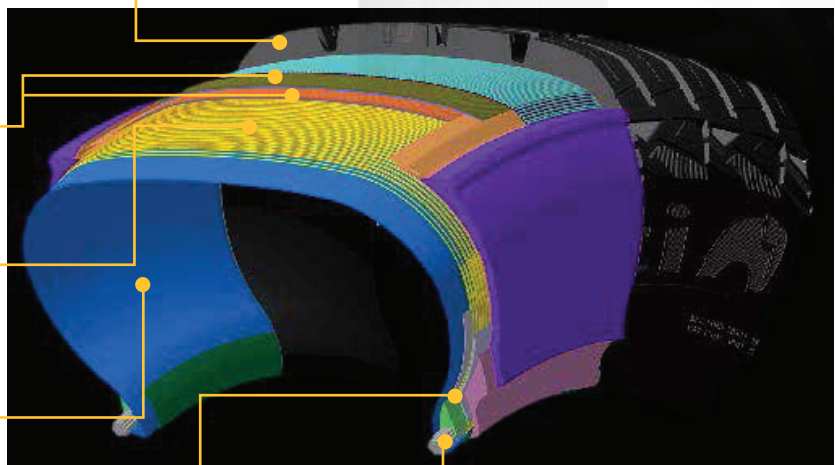
Polyester cord with high modulus and low shrinkage, providing the best safety

▶ **Inner layer**

Thickened Inner layer, the thickness is 40% thicker than the previous generation product

▶ **Bead structure**

Patented bead structure design technology, provide better durability



▶ **Bead wire**

Single wire winding technology to enhance the strength of the tyres bead and reduce the appearance of fatigue effects



tyres4u.co.nz
☎ 0800 888 973



RIM INCH	ITEM CODE	SIZE	LOAD INDEX	SPEED RATING	PLY RATING	DESCRIPTION
17"	100A4184	225/65R17	102	T		Rwl All Terrain
	100A4185	245/65R17	105 / 102	S	6PR	Rwl All Terrain
	100A4186	265/65R17	120 / 117	S	10PR	Rwl All Terrain
18"	100A4180	235/60R18	103	T		Rwl All Terrain
	100A4181	265/60R18	110	S		Rwl All Terrain
	100A4183	265/70R18	116	S		Rwl All Terrain
	100A4182	285/60R18	121 / 118	S	10PR	Rwl All Terrain
20"	100A4179	285/50R20	119 / 116	S	10PR	Rwl All Terrain



• **SHOULDER GUARDRAIL DESIGN**

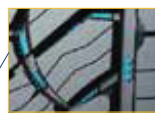
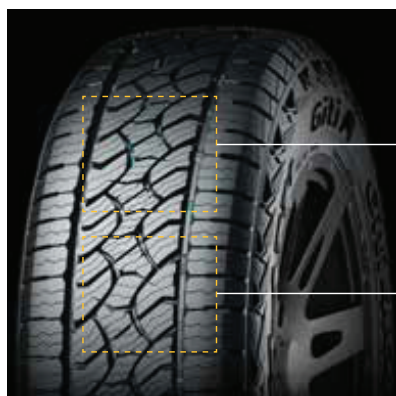
- Prominent two-in-one combined shoulder design provides additional off-road traction.

• **MAIN GROOVE GITI LOGO SHADING**

- Increase the sense of high-end products.

• **WHITE SIDEWALL DESIGN**

- Improve product visual perception.



• **SPECIAL DETAIL DESIGN AT THE BOTTOM OF GROOVE**

- Reduce stone residue.

• **OPEN TRANSVERSE GROOVE DESIGN**

- Effectively remove sediment and improve off-road performance.

• **SHOULDER ONE - THIRD TRANSVERSE GROOVE DESIGN**

- Block noise transmission.

• **SEGMENTED DISCONTINUOUS TRANSVERSE TRENCH DESIGN**

- Improve stiffness and reduce noise.