



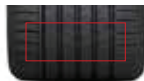
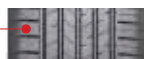
# GITISport<sup>S1</sup>

The GitiSport<sup>S1</sup> is a pure UHP tyre designed to satisfy the needs of the tough driving condition. Exceptional grip, short braking distances in wet conditions, are among the key features of this product.

## FEATURES & BENEFITS

### • Exceptional Handling

- Innovative new tread compound for extremely short braking distances
- Balanced, stiff shoulders for precise steering and immediate response
- Optimised pattern block geometry & sequence for low noise and smooth riding



### • Wet Driving Safety

- Four wide grooves for exceptional water drainage
- The GitiSport innovative compound uses a wet grip elastomer ( a polymer with a high density) that gives it a superb flexibility. The result is a superb result in wet braking, confirmed by the tyre. A wet label grading



### • Durability and Mileage

- The usage of a long life elastomer, the compound is characterised by a high resistance to wear
- The curved shoulder design of GitiSport enables it to cut into the water, maximise the total contact area with the road and delays the onset of aquaplaning
- The extensive usage of Silica results in a reduced low energy loss



Rim size:

16- 21"

Aspect Ratio:

30- 60

Max. speed:

240 - 300 km/h

August 2023



tyres4u.co.nz  
0800 888 973

# GITISport<sup>S1</sup>



RIM INCH	ITEM CODE	SIZE	LOAD INDEX	SPEED RATING	EXTRA LOAD
<b>17"</b>	100A3753	245/40R17 Asymmetrical	91	Y	
	100A3282	225/45R17 Asymmetrical	94	Y	XL
<b>18"</b>	100A3049	275/40R18 Asymmetrical	99	Y	
<b>19"</b>	100A3044	245/45R19 Asymmetrical	102	Y	XL
<b>20"</b>	100A3045	255/35R20 Asymmetrical	97	Y	XL



**tyres4u.co.nz**  
**0800 888 973**

August 2023